

Congratulations on purchasing the Metadyne Havoc launcher, the greatest multiple use air powered weapon on the planet. The Havoc is made entirely in the USA at our plant in Boise, Idaho. Please read this manual completely before using your Havoc launcher to ensure safe and proper operation for years to come. And of course, we have to have all those ridiculous warnings because there are those that are just plain dumb.

Warning

This is not a toy. Misuse may cause serious injury or death. Eye, face and ear protection must be worn by the user and all within range. User must be 18 years or older to use, or under adult supervision. Safety is your responsibility so make sure you are familiar with the Havoc before use.

Liability Disclaimer

The Havoc launcher is classified as a dangerous weapon and is surrendered by Precise Innovations, LLC with the understanding that the purchaser assumes all liability resulting from unsafe handling or any action that constitutes a violation of any applicable laws or regulations. Precise Innovations, LLC shall not be liable for personal injury, loss of property or life resulting from the use of this weapon under any circumstances, including the intentional, reckless, negligent, inattentive or accidental discharges.

All information is subject to change without notice. Precise Innovations, LLC reserves the right to modify, change, or improve the product without incurring any obligation to incorporate said changes to products previously sold.

If you do not agree with the above liability disclaimer or do not accept liability, do not use the Havoc launcher. By using the Havoc launcher, you release Precise Innovations, LLC of any and all liability associated with its use.

Warnings

- 1) This product is meant to shoot Nerf brand "Vortex" rockets or, if the Metadyne paintball cartridge system is purchased, paintballs.
- 2) Read all instructions before use.
- 3) Handle this product as if it were loaded at all times.
- 4) Familiarize yourself with the safety.
- 5) Disengage air supply when not in use
- 6) Keep barrel sleeve on launcher when not in use
- 7) Never point the launcher at anything you don't intend to shoot.
- 8) Keep finger off the trigger until ready to shoot.
- 9) Never look down the barrel as eye damage could result.
- 10) Bacon is the best meat ever. I eat it everyday. But it is not good for you. Just thought you should know.
- 11) The Havoc launcher is extremely powerful. Never put anything in the barrel except Nerf brand vortex rockets or paintballs if the Metadyne paintball cartridge has been purchased.
- 12) When dry firing the launcher, point it in a safe direction away from any debris or moveable object as this launcher is wicked powerful. .
- 13) Pressurize the launcher only when it will be used immediately.

- 14) DO NOT work on launcher when air supply is connected. Disconnect air supply as directed before disassembling for maintenance.
- 15) DO NOT modify the launcher in any way as it will void all warranties, expressed or implied.
- 16) Unless otherwise noted, repair or maintenance must be performed by a qualified technician.
- 17) Store the launcher unloaded and degassed in a safe and secure location.
- 18) As much as you want to, do not engage in “let’s see what happens when we shoot _____”. Reread #1.
- 19) Do not submerge in water or allow internal parts to get wet.
- 20) Never allow liquid CO2 to enter the HAVOC launcher.
- 21) Maximum input pressure to the HAVOC is 850 psig. You must ensure that the input pressure does not exceed 850 psig. Use of a regulator and/or burst device should be used to ensure that input pressure does not exceed 850 psig.
- 22) DO NOT attempt to load the launcher unless the safety is engaged.

Getting Started

Safety engagement: to engage the safety so the trigger will not fire, press the safety from the right side of the launcher until it is flush with the trigger housing. Until you are ready to fire, the safety should always be in this position. To fire, simply press from the left side of the launcher until the safety stops.

Air supply

The HAVOC launcher may be used with HPA (compressed air) or CO2. If using CO2 an anti-siphon device (or other suitable method) must be used to ensure that liquid CO2 will not enter the HAVOC launcher. The HAVOC launcher should not be used with any other fluid source.

The HPA/CO2 source must be regulated/controlled BEFORE connection to the HAVOC launcher to ensure that the maximum input pressure does not exceed 850 psig. Use of a pressure relief device (such as a burst disk) on the input line is recommended to ensure supply pressure does not exceed 850 psig.

The Havoc launcher comes with a macro line fitting for the under mount version, and a combination of macro line to an ASA fitting for the rifle version. Use only approved air cylinders for paintball use. Since there are innumerable ways and methods to hook up your air delivery system, use only approved paintball lines and fittings and seek advice or help from a qualified paintball technician. The Havoc launcher is designed to work like any paintball marker in regards to air hook-up.

Loading

The Nerf Vortex rocket is loaded by pushing it down the barrel as far as you can reach. Load with the fins going in first. Do not use excessive force or jam the rocket in further than it should go so that it squishes out of shape. This will cause poor performance and shorten the life of the rocket. Due to the power of the Havoc launcher, the rockets will, over time, perform worse. Do not use the Nerf Vortex rockets if they are damaged or fly erratically.

Velocity Adjustment

The Havoc launcher comes preset to its maximum velocity. To adjust the velocity, turn the regulator adjustment knob (#8) out until the desired velocity is achieved.

NOTE: when adjusting the velocity to a higher pressure, the chamber will charge immediately. When adjusting the velocity to a lower pressure, you will need to dry fire the launcher to relieve pressure in the chamber after making the adjustment. If you adjust the knob too far in the counter clockwise direction the unit will not fire. If this happens, turn the knob back in until it fires. This is the lowest velocity setting you can achieve.

Warning: Do not adjust the regulator knob more than a ¼ inch out of the main housing. The unit will not operate below 150 psi and turning the regulator adjustment knob too far will go below 150 psi and may cause damage or injury.

Unloading the Launcher

1. Disconnect air cylinder.
2. Unscrew barrel and pull out the Nerf Vortex rocket.

Disconnecting Air Supply

To disconnect air supply, remove air cylinder according to the manufacturer's instruction. Make sure Havoc launcher is unloaded (see previous section). Point launcher in safe direction and fire several times to relieve pressure in the chamber.

Maintenance

The Metadyne Havoc launcher is designed to give you years of trouble free operation, but you must follow the simple maintenance instructions outlined below.

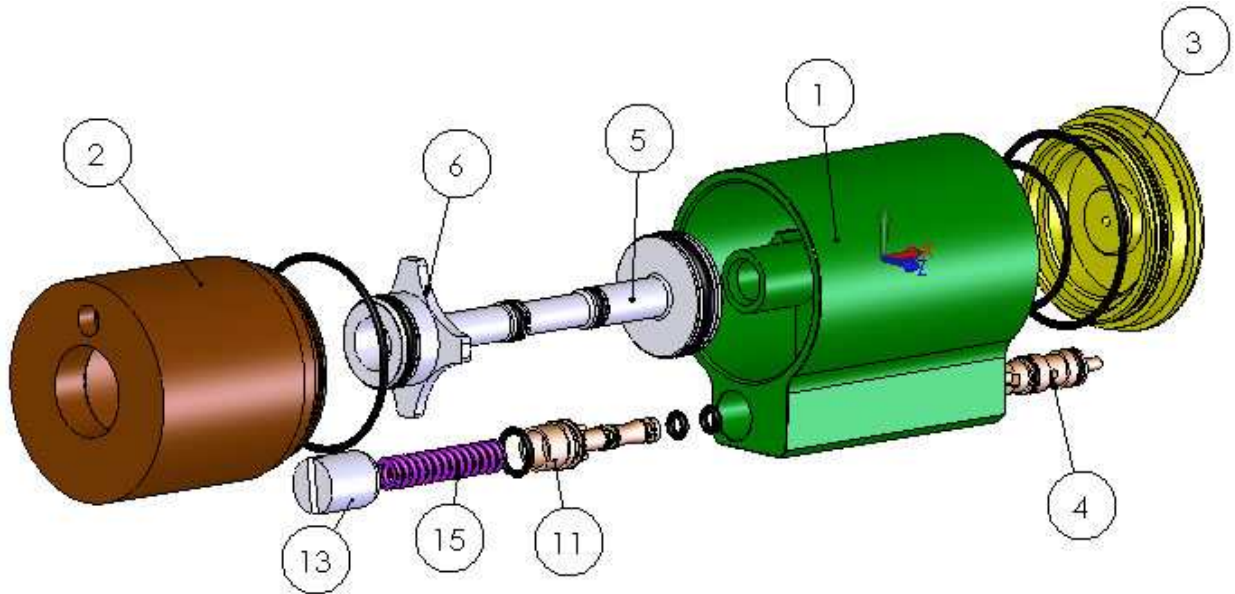
1. Make sure the air is disconnected and no air is in the chamber.
2. Clean only with a damp towel. Never use water on the internal parts.
3. After approximately 500 shots, check to make o-rings are lubricated. Use 100% petroleum jelly to lube all o-rings.
4. Never remove the air plug screws (#A) unless they are leaking air. If they are leaking, apply Teflon tape or Loctite 545 and reinstall (see video link below for more details).
5. The piston cap seal screw (#D) is installed with Loctite. If you remove this screw, you must reapply Loctite 262 or similar thread locking compound upon reinstallation.

For more information, visit the following links:

www.metadyneindustries.com

www.youtube.com/watch?v=ZXdF1vO60to (instructional video)

www.youtube.com keyword Metadyne



Main Body

Parts List

2. Main housing
 - a. 1 each -028 o-ring
3. Front chamber
 - a. 1 each -032 o-ring
4. Rear seal
 - a. 1 each -032 o-ring
5. Valve
6. Main piston
 - a. 2 each -107 o-rings
 - b. 1 each -214 o-ring
7. Piston cap
 - a. 1 each -116 o-ring
8. Piston spring (not shown)
9. Trigger (not shown)
10. Trigger housing (not shown)
11. Safety (not shown)
11. Regulator piston
 - a. 2 each -006 o-rings
 - b. 1 each -012 o-ring
12. Barrel (not shown)
13. Regulator adjustment knob
14. Relief valve (not shown)
15. Regulator spring

Under Mount (not shown)

12. Back brace
13. Mount body
14. Mount clamp

Rifle (not shown)

15. Stock adapter
16. ASA mount
17. Stock
18. Grip

Screws and bolts (not shown)

- A. Valve retainer
- B. Air plugs
- C. Retaining screw
- D. Piston cap seal screw
- E. Under mount assembly screws
- F. Grip bolt
- G. Back brace or Stock adapter bolt
- H. Stock retaining bolt
- I. Pin

For more information visit
www.metadyneindustries.com or watch
 the instructional video at
www.youtube.com/watch?v=ZXdF1vO60to