

Z-1™ / MEGA-Z™ SEMI-AUTOS



CAUTION
THIS IS NOT A TOY !!!

PLEASE READ INSTRUCTIONS CAREFULLY PRIOR TO USING THIS GUN.
IF MISUSED, IT CAN CAUSE SERIOUS INJURY, BLINDNESS OR DEATH.

Protective eye devices and ear protection should be worn at all times during play or while cleaning the CO2 pistol. Never look into the barrel. If accidentally hit in the eye, it could cause blindness or death.
This CO2 pistol is for use by persons 18 years of age or older.
Remove all CO2 from gun before disassembling.

OPERATING INSTRUCTIONS

1) SAFETY

Pull knob acts as the safety. Forward is "SAFE" position, pulled back, gun is cocked and ready to fire. To put gun in "SAFE" position, release bolt knob forward by hand while pulling the trigger.

NOTE: BE SURE THERE ARE NO PAINTBALLS IN PAINTGUN.

2) FIRING

Pull bolt knob back to firing position, aim and pull trigger.

CAUTION: Never fire gun with front receiver removed.

NOTE: Parts list for front receiver enclosed.

ALSO: Never dry fire your gun it may cause damage to the internal parts.

3) VELOCITY ADJUSTING

A) In order to get the proper chronograph reading shoot

10 to 15 rapid shots up in the air until snow comes out of the barrel.

B) Clockwise lowers feet per second

C) Counter-clockwise raises feet per second

MONTNEEL DESIGN, INC

304 CHURCH ST. PO BOX 645

NEW MILFORD, PA 18834

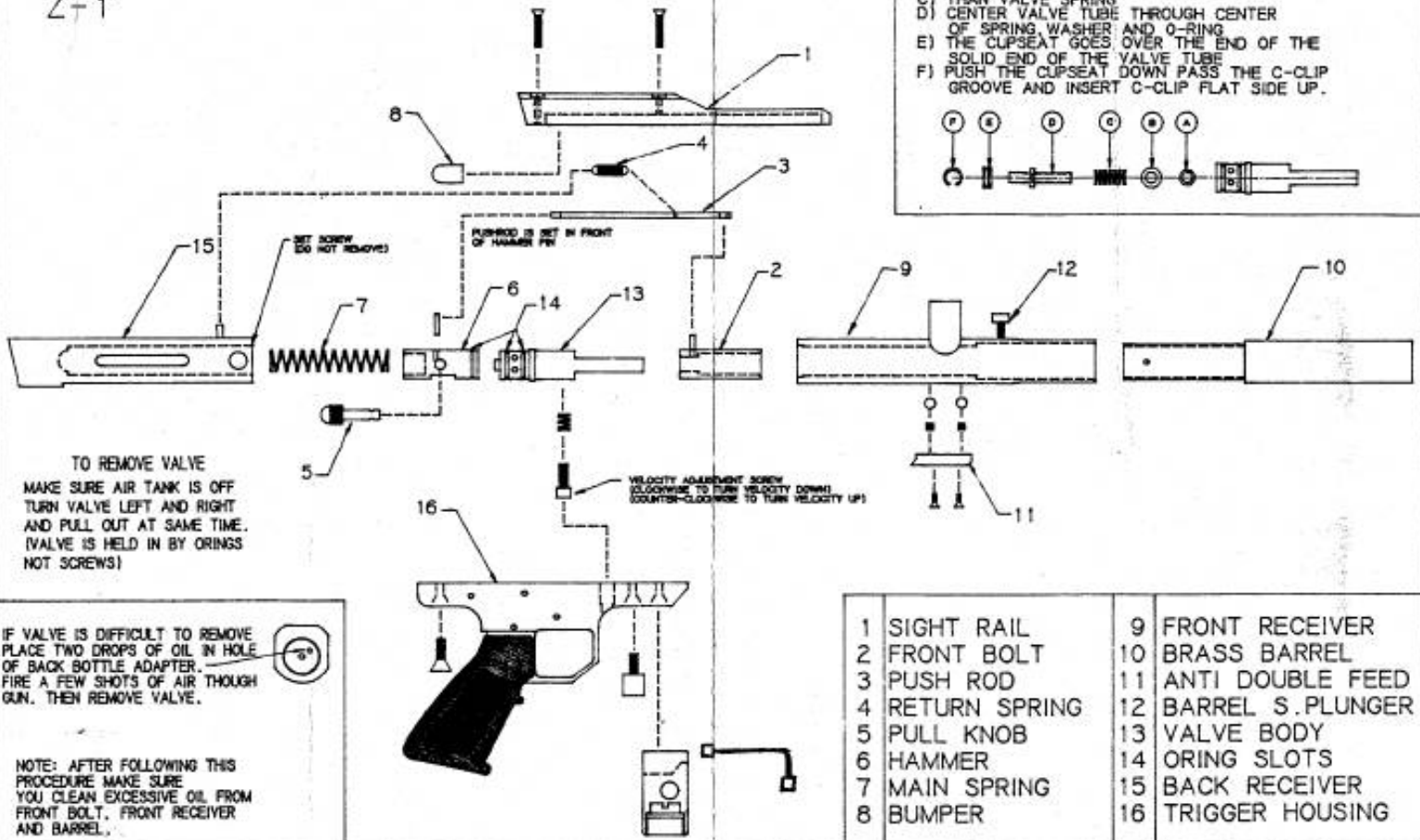
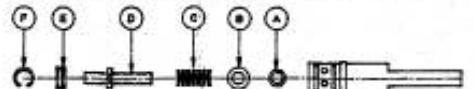
(717) 465-9480

MEGA-Z™ SEMI-AUTO PAINTBALL GUN

Z+1

VALVE ASSEMBLY

- A) PLACE O10 O-RING IN FIRST
- B) SECOND PLACE BRASS WASHER
- C) THEN VALVE SPRING
- D) CENTER VALVE TUBE THROUGH CENTER OF SPRING WASHER AND O-RING
- E) THE CUPSEAT GOES OVER THE END OF THE SOLID END OF THE VALVE TUBE
- F) PUSH THE CUPSEAT DOWN PASS THE C-CLIP GROOVE AND INSERT C-CLIP FLAT SIDE UP.



TO REMOVE VALVE
MAKE SURE AIR TANK IS OFF
TURN VALVE LEFT AND RIGHT
AND PULL OUT AT SAME TIME.
(VALVE IS HELD IN BY ORINGS
NOT SCREWS)

IF VALVE IS DIFFICULT TO REMOVE
PLACE TWO DROPS OF OIL IN HOLE
OF BACK BOTTLE ADAPTER.
FIRE A FEW SHOTS OF AIR THOUGH
GUN. THEN REMOVE VALVE.

NOTE: AFTER FOLLOWING THIS
PROCEDURE MAKE SURE
YOU CLEAN EXCESSIVE OIL FROM
FRONT BOLT, FRONT RECEIVER
AND BARREL.

VELOCITY ADJUSTMENT SCREW
(CLOCKWISE TO TURN VELOCITY DOWN)
(COUNTER-CLOCKWISE TO TURN VELOCITY UP)

1	SIGHT RAIL	9	FRONT RECEIVER
2	FRONT BOLT	10	BRASS BARREL
3	PUSH ROD	11	ANTI DOUBLE FEED
4	RETURN SPRING	12	BARREL S.PLUNGER
5	PULL KNOB	13	VALVE BODY
6	HAMMER	14	ORING SLOTS
7	MAIN SPRING	15	BACK RECEIVER
8	BUMPER	16	TRIGGER HOUSING