



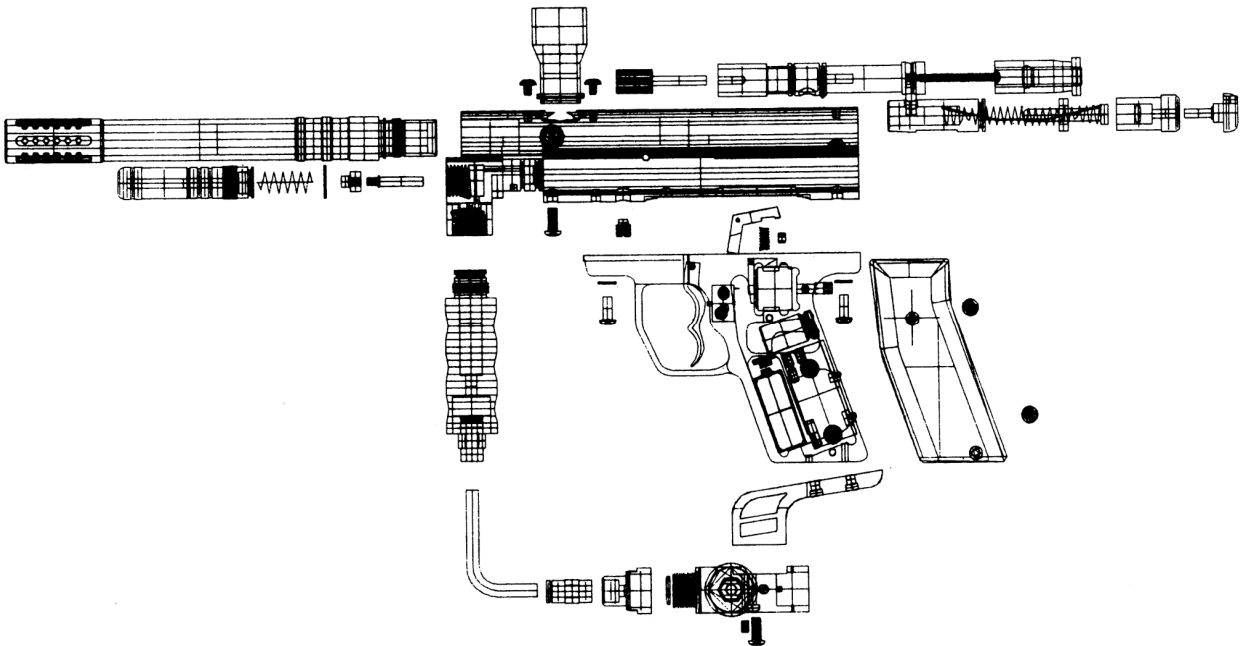
Paintball Products Inc.

1172 S. Beltline Hwy.

Mobile AL, 36609

1-866-637-2468

www.m3paintball.com



Owners Manual

Warning!

This marker is not a toy. Misuse may cause serious injury or death. Eye protection designed for paintball use must be worn by the user and any person within range. Recommend at least 18 years to purchase, 14 years old to use with adult supervision, or 10 years old to use on paintball fields meeting ASTM-Standard F1 777-97.

Read operation manual before using.

Warning!

Never shoot at anyone without the proper protective equipment for the eyes, ears, throat and head, which must be worn at all times. Eye protection must be designed specifically for paintball use. Failure to follow these safety precautions may result in bodily injury including blindness and deafness.

Rules for Safe Paintball Marker Handling

1. Always wear proper eye, face, and ear protection designed specifically to stop paintballs.
2. Never shoot a person who is not wearing proper protection.
3. Treat every paintball marker as if it were loaded.
4. Never point a paintball marker at anything you don't intend to shoot.
5. Keep the paintball marker on safety until ready to shoot.
6. Keep the barrel plug in the marker's barrel when not shooting.
7. Always remove gas source before disassembly.
8. Store the paintball marker unloaded and degassed in a locked place.
9. Follow warnings listed on the gas source for handling and storage.
10. Never use anything other than .68 caliber paintballs.
11. Do not shoot fragile objects such as windows.
12. Paintballs may cause staining of some porous surfaces such as brick, stucco, and wood.
13. Always measure your marker's velocity before playing paintball.
14. Never shoot at velocities in excess of 300 feet per second.

Operating Instructions

1. **Turn on Marker and Put on "SAFE"**. See E.T.F. Manual for operating instructions of the electronic trigger frame.
2. **Cock**: Cock marker by pulling cocking handle back fully until locked in sear position. This is a semi-automatic marker which will re-cock itself after firing when working correctly.
3. **Attach Gas Source**: Marker can be used with a constant air refillable cylinder (not included). You should expect better gas efficiency with a larger refillable tank.
4. **Load Paintballs**: **(1)** Insert paintballs (not included) in port or **(2)** attach hopper (not included) and fill with paintballs (Not included).
***Note-** Paintballs should be stored in a cool, dry place in a sealed bag or container. Do Not subject paintballs to freezing, excessive heat, humidity, or store in direct sunlight.
5. **Eye Protection**: Make sure that everyone within range (200ft.) is properly protected from paintball impact.
6. **Remove Barrel Plug** and turn off safety.
7. **Verify Velocity**: make sure that the paintball marker's velocity is below 300 feet per second.
8. **Fire**: The paintball marker is now ready to fire.